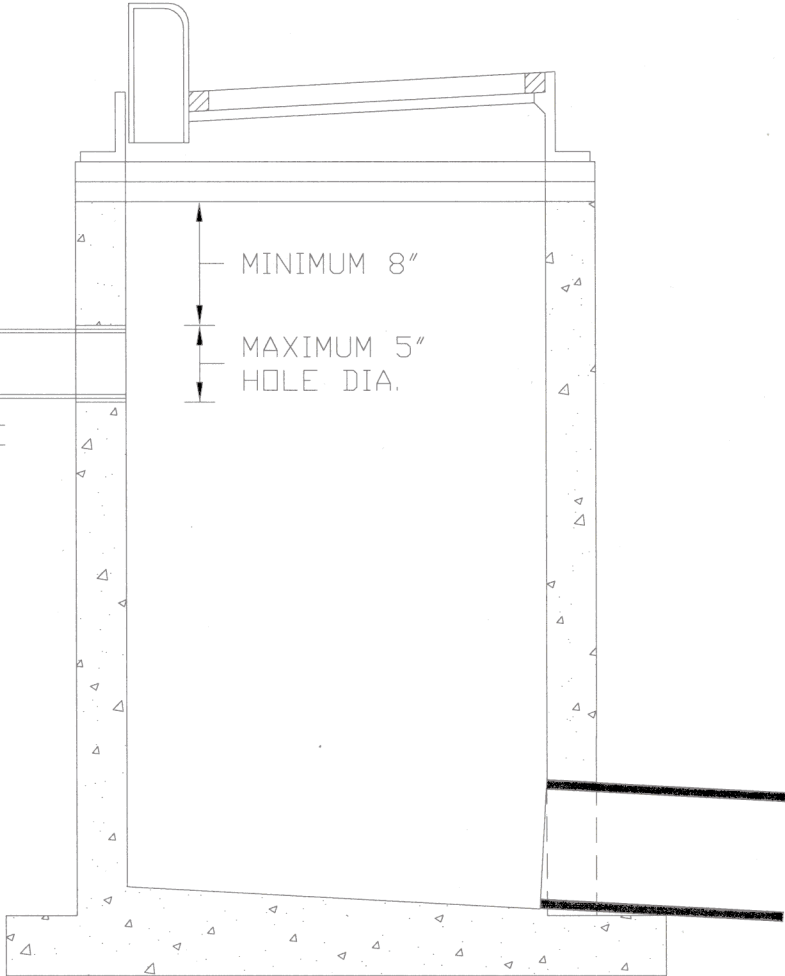


SET END OF PIPE FLUSH WITH INTERIOR WALL.
 CAULK THROUGH ENTIRE WALL THICKNESS WITH EXPANDABLE STYROFOAM OR APPROVED NON-SHRINKABLE GROUT. REMOVE EXCESS MATERIAL FROM INTERIOR WALL.

PVC PIPE
 2"-4" ID

HOLE SHALL BE CORE DRILLED AT A DIA. OF PIPE SIZE +1".

MINIMUM 8"
 MAXIMUM 5" HOLE DIA.



SUMP DRAIN CONNECTION TO EXISTING CATCH BASIN